



MEMORANDUM

To:	State Board of Education & Early Development	Date:	September 8, 2023
Thru:	Dr. Deena M. Bishop, Commissioner	Telephone:	(907) 269-4583
From:	Suzzuk Huntington, Superintendent/Director Mt. Edgecumbe High School	Subject:	Agenda 12D. Mt. Edgecumbe High School Standing Report

Current Enrollment

Target class sizes and openings are general guidelines based on a full capacity dorm and typical schedule. We reduced the number of beds kept available for quarantine quarters, which was originally 18 and is now 12. Numbers may be adjusted based on applicants, dorm availability, and class numbers. Seniors and juniors are only accepted if transcripts align with graduation requirements.

Capacity- 406 Beds (plus 25 day students from Sitka) - 12 beds kept open for illness mitigation

Grade	Target class size	Returning	“Openings”	Accepted new	Class size
9	115-125	0	115-125	119	119
10	115-120	79	*35-40	32	111
11	100-105	83	*8-13	21	104
12	95-100	75	*17-22	2	77
totals	430	250	167	174	411

*We fully closed admissions the last week in July to leave enough time to arrange travel and for parents to complete the enrollment process. Prior to school starting, enrollment dropped by 12 students, of which 8 were returning students and 4 were newly accepted.

Target class sizes and openings are general guidelines based on a full capacity dorm and typical schedule. Numbers may be adjusted based on applicants, dorm availability, and class numbers. Seniors are only accepted if transcripts align with graduation requirements.

- Returning students: 237, including 20 day students
- Not returning: 27

- Capacity: female dorm beds: 242, male dorm beds: 164

This year, we were able to dedicate the second pod of Heritage Hall (8 beds) to expand availability of premium rooms to male students. HH now has the capacity to house 16 males on the first floor (compared to 8 in previous years). The capacity for females on the second floor is 32 beds. These premium rooms hold two students, with a bathroom and shower room for every 8 students.

Home Communities

Mt. Edgecumbe students come from 108 communities in Alaska. The three communities with the largest representation are Anchorage (46 students), Sitka (25 students) and Nome (17 students). Many of the Anchorage students have roots in various communities, though that is not reflected in this data. More than 80% of the communities have 5 or less students attending MEHS.

Year	Home communities	Single student	2-5 students	6-10 students	more than 10 students
2022-2023	110	46	46	11	7
2023-2024	108	32	59	10	6

Beginning of the Year Initiatives

- Two days were dedicated to New Teacher Orientation this school year, an increase from the one day we provided last school year.
- Training on Discipline in the Secondary Classroom framework developed by Safe and Civil Schools was provided to teachers (2 full days) by Karl Schleich of Sun Dog Consulting.
- Training on Module B of the Foundations framework: Managing Behavior in Common Areas and with Schoolwide Policies was provided to residential staff, both state and contract staff (1.5 days) by Karl Schleich of Sun Dog Consulting.
- Training of Student Supervision, from the Foundations framework developed by Safe and Civil Schools, was provided to both academic and residential staff (half day) by Karl Schleich of Sun Dog Consulting.
- Residential Life initiated a new program: EdgeLife to teach students in groups of about 25 students about the programs and expectations of the various components of residential life over the first two weeks of school.

Representative Photos of Residential Spaces on Campus



Boys Main Dorm room - 6 person

Girls Main Dorm - 6 person

Boys Main Dorm room - 6 person



Boys Main Dorm room - 2 person



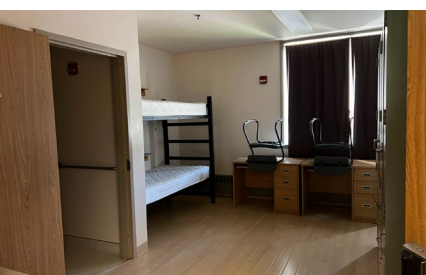
Ivy Hall Laundry room



Heritage Hall room - 2 person



Heritage Hall 2 person + 2 person



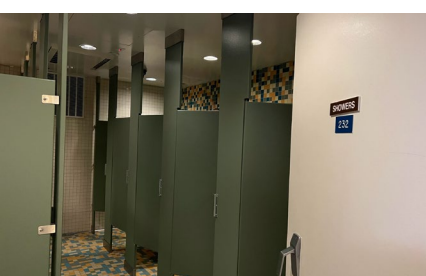
Ivy Hall (Girls) - 2 person



Boys Dorm Lounge



Girls 2nd Floor Lounge



Girls 2nd Floor Shower room



Girls 1st Floor Kitchen



Girls Main Dorm 2nd Floor Laundry



Sick Bay room



Ivy Hall - 2 person w/ private bathroom (only floor with this capacity)